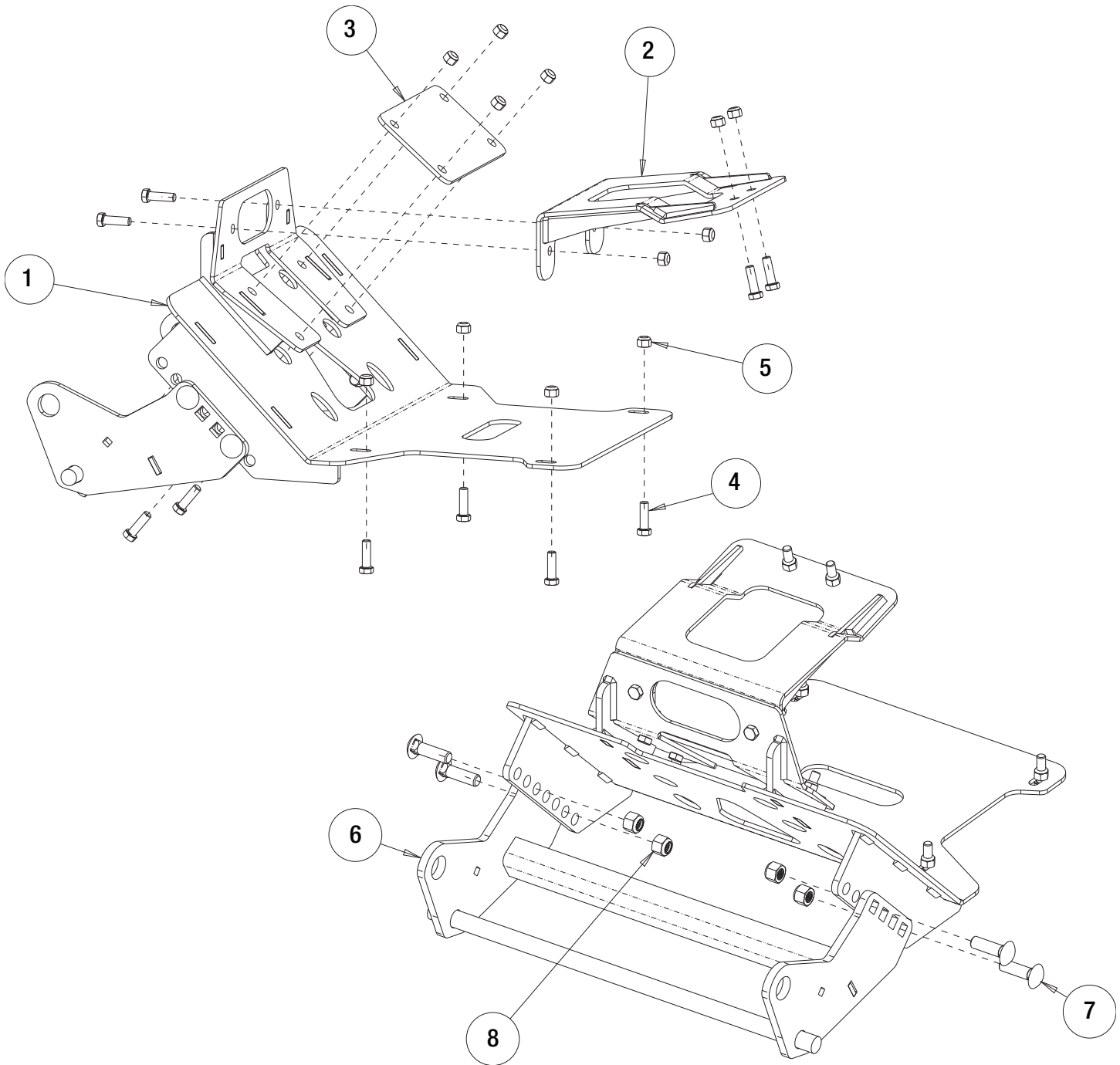


MOUNT KIT 16067910 2016+ CAN-AM DEFENDER



SnowDogg[®]
by **Buyers**

SNOW PLOW TRUCK MOUNT INSTALLATION MANUAL



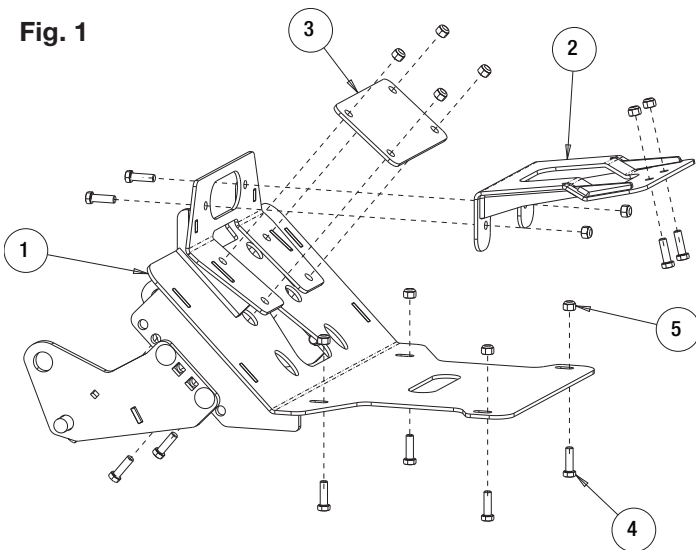
Parts List

ITEM	PART NO.	QTY.	DESCRIPTION
1	16067911	1	PLATE WELDMENT, MOUNT, CAN-AM DEFENDER
2	16067912	1	WELDMENT, TOP PLATE
3	16067913	1	PLATE, BACK
4	FCS038016125	12	SCREW, HHC-3/8-16 X 1.25 GR 5 ZN
5	FNE038016044	12	NUT, NYLOCK 3/8-16 X 7/16 ZINC
6	16067714	1	PUSH BAR, ASY
7	3029357	4	BOLT, CARRIAGE 1/2-13 X 1.75 GR8 ZN
8	3002397	4	LOCKNUT, HEX NYLOCK, 1/2-13 ZN, G8

INSTRUCTIONS

1. Park the vehicle on a level surface, engage the parking brake, shutoff the engine, and remove the key.
2. If your vehicle is equipped with a winch, remove the two existing bolts on the fairlead and the four bolts holding the winch.
3. Hold the Plate Weldment (1) up to the skid plate of the vehicle.
 - a. If your vehicle has the holes that align with the four slots on the bottom of the Plate Weldment (1), use four 3/8-16 X 1.25 Hex Screws (4) and 3/8-16 Nylock Nuts (5) to mount the base plate to the vehicle (See Figure 1).
 - b. If your vehicle does not have pre-existing holes to mount the Plate Weldment (1), use the slots on the bottom of the Plate Weldment (1) as a template to mark the four hole locations on the bottom side of the vehicle. Use a drill and 7/16-inch drill bit to drill the four marked hole locations. Then, use four 3/8-16 X 1.25 Hex Screws (4) and 3/8-16 Nylock Nuts (5) to mount the bottom of the Plate Weldment (1) to the vehicle (See Figure 1).

Fig. 1



4. Position the Back Plate (3) behind the front angled face of the skid plate so that the holes line up with those of the vehicle (See Figure 1). Use four 3/8-16 X 1.25 Hex Screws (4) and 3/8-16 Nylock Nuts (5) to securely attach the front angled of the Plate Weldment (1) to the vehicle. **Note: If the vehicle is equipped with a winch, the existing hardware can be used, and the Back Plate (3) will not be required. Reattach the winch using the four bolts.**
5. Position the Top Plate Weldment (2) behind the front face of the skid plate above the winch (if equipped)

- so that the holes line up with those of the vehicle (See Figure 1). Position the fairlead removed in Step 2 back onto the front of the vehicle. Use four 3/8-16 X 1.25 Hex Screws (4) and 3/8-16 Nylock Nuts (5) to securely attach the fairlead, front face of the Plate Weldment (1), and Top Plate Weldment (2) to the vehicle.
6. Attach the Push Bar (6) to the Plate Weldment (1) via the Adjust Bar and adjust it so that the 0.75-inch diameter cross beam is positioned at a height of 11 inches from the floor (see Figure 3). Secure with four 1/2-13 X 1.75 Carriage Bolts (7) and 1/2-13 Hex Nylock Locknuts (8) (See Figure 2).

Fig. 2

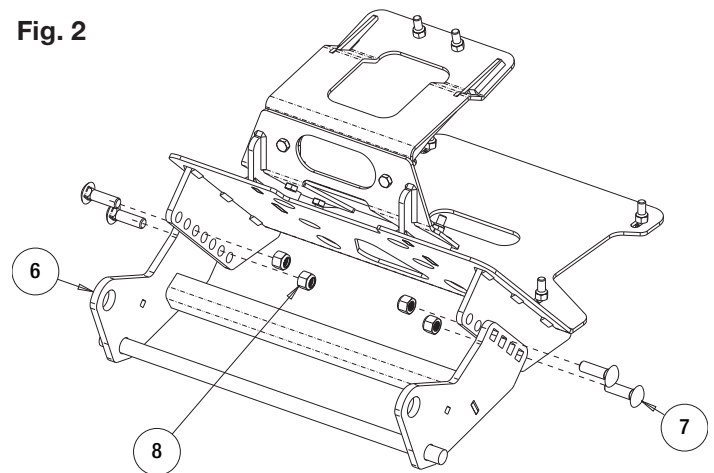
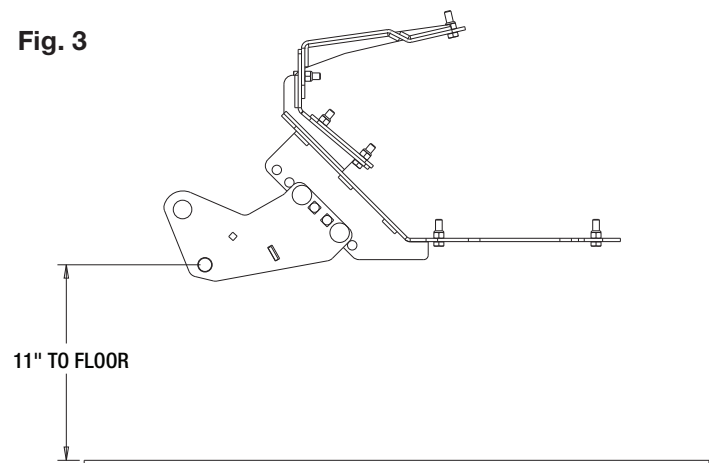





Fig. 3



7. Make sure all nuts and bolts are tight. Check and re-torque all fasteners after five hours of usage to ensure safe plow operation.

Recommended Fastener Torque Chart (ft.-lb.)			
Size	 SAE Grade 2	 SAE Grade 5	 SAE Grade 8
1/4-20	6	9	13
5/16-18	11	18	28
3/8-16	19	31	46
3/8-24	24	46	68
7/16-14	30	50	75
1/2-13	45	75	115
9/16-12	66	110	165
5/8-11	93	150	225
3/4-10	150	250	370
7/8-9	150	378	591
1-8	220	583	893
Metric Grade 8.8 (ft.-lb.)			
Size	Torque	Size	Torque
M6	7	M12	60
M8	17	M14	95
M10	35	M16	155
These torque values apply to fasteners except those noted in the instruction.			

WARNING

- DO NOT under any circumstances disable, remove or relocate any sensors or components related to the operation of the air bags.
- Always follow the vehicle manufacturers' recommendations relating to snowplow installation.
- To comply with Federal Regulations and to assure a safe vehicle, the Front Gross Axle Weight Rating (FGAWR), Rear Gross Axle Weight Rating (RGAWR), and the Gross Vehicle Weight Rating (GAWR) must not be exceeded at any time.
- Due to the variety of equipment that can be installed on this vehicle, it is necessary to verify that the Front Gross Axle Weight Rating (FGAWR), Rear Gross Axle Weight Rating (RGAWR), and the Gross Vehicle Weight Rating (GAWR) are not exceeded at any time. This may require weighing the vehicle and adding ballast as necessary. It may also limit payload capacity of the vehicle. It is the operator's responsibility to verify that these ratings are not exceeded.

CAUTION

- Read all instructions prior to assembly
- It is critical that all fasteners be properly torqued for safe plow operation – see chart above.
- Fasteners should be retorqued after 5-8 hours of plow use

FULL TWO-YEAR WARRANTY

Manufacturer will repair, or at manufacturer's discretion will replace any part of this snowplow which proves to be defective in workmanship or material under normal use for a period of two year from the date of delivery to the original purchaser. Any cost incurred in returning the product to the supplier is the responsibility of the consumer.

EXCLUSIONS

Manufacturer shall not be liable for special, incidental, or consequential damages, or for damages resulting from lack of necessary maintenance, from misuse, abuse, acts of God, or alteration of the product. Some states do not allow the exclusion or limitation of incidental or consequential damages, so the above limitation or exclusion may not apply to you.