



LiftDogg™

TRUCKMOUNT

MOUNT KIT

5051206

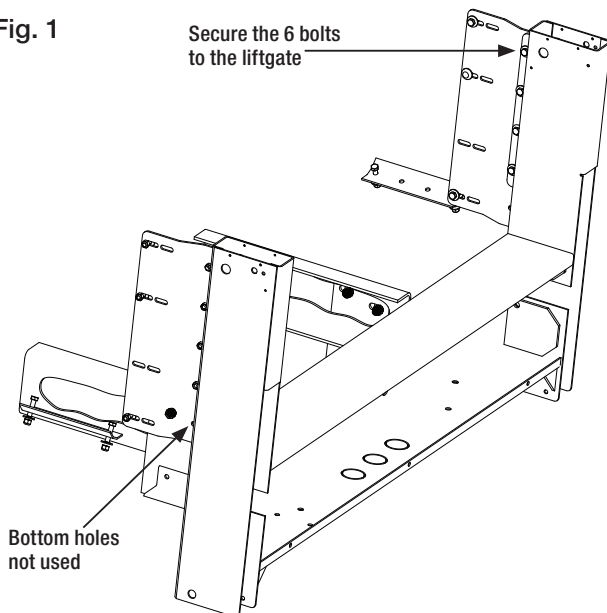
F-150, 2015+

INSTALLATION

MANUAL

1. Secure the mounting extension (3) to the Mounting holes of the liftgate using eight 3/8" bolts, eight washers, and eight locknuts. (fig.1)

Fig. 1

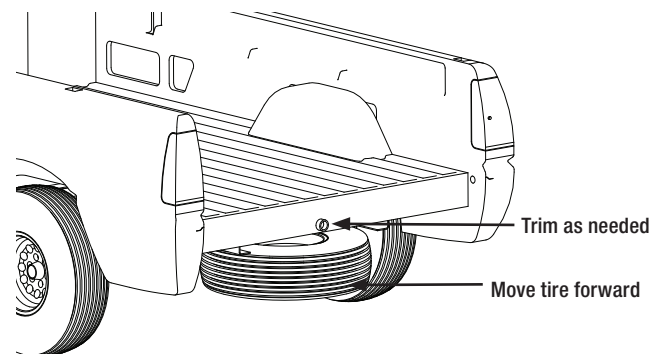


2. On the truck, remove the tailgate and tailgate hardware. On the 2004-present, only the tailgate needs to be removed.
3. Remove the rear bumper. Be careful not to drop the bumper when removing the fasteners. On the 2004 to present F150 model, you will need to remove the hitch.
4. On 2015+ F-150 model, No modification to the Rear Light fixture is necessary. The Liftgate is not blocking the safe passage of changing a light bulb

5. On the 2005+ models, move the tire forward to avoid interference with the liftgate. (fig. 2)

- a. Lower the spare tire
- b. Push the spare tire forward until it is even with the rear of the truck box.
- c. Raise the spare tire up again.
- d. If the liftgate is mounted flush to the truck bed, trim the tire-tube so that it is even with the rear of the truck bed.

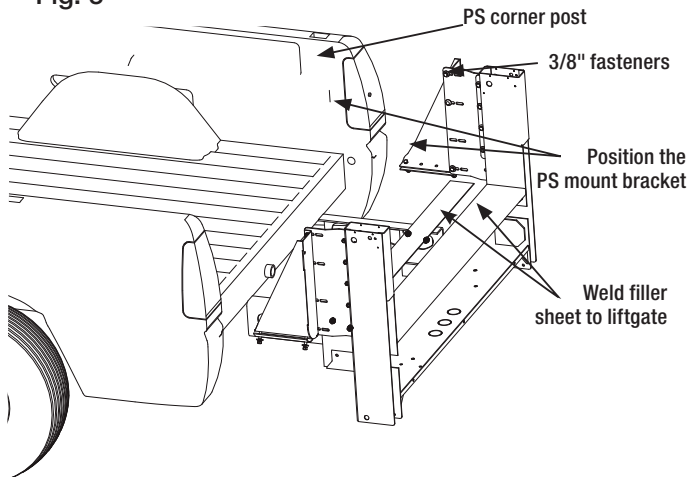
Fig. 2



6. Place the filler sheet metal on the liftgate before trying to mount on the truck. The filler sheet metal will act as a gap bridge between the truck-bed and the liftgate.
7. Weld the supplied filler sheet metal to the top corner of the liftgate upper frame.
8. Align the mounting brackets into the truck bed corner posts. Do not drill yet.

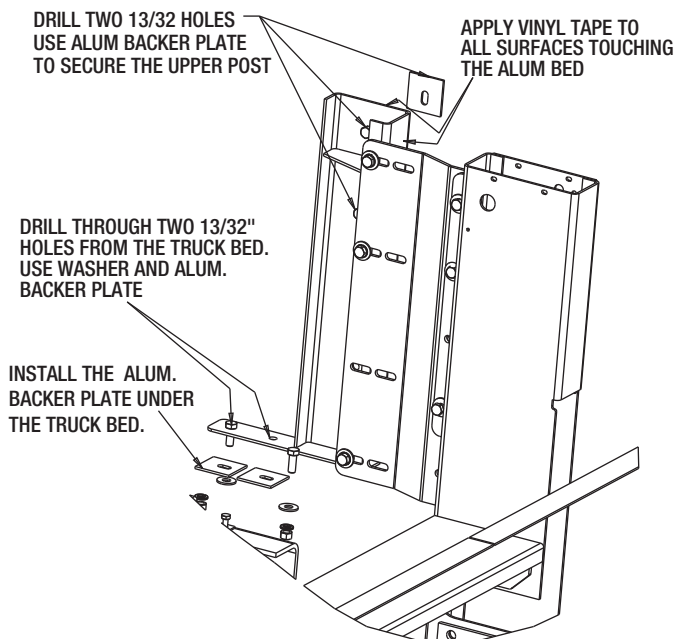
9. Place the Liftgate into the bed opening so it will align with the spare tire tube. Make sure it is centered in the opening of the truck, flush with the bed floor, and is 90 deg vertical to level ground. Apply vinyl tape onto all surfaces touching the aluminum truck bed. Vinyl tape is to be used as a separation between steel and aluminum to prevent galvanic corrosion. This interaction will occur between two different metals in direct contact with each other.

Fig. 3



10. Secure three 3/8" x 1" bolts, three flat washers and three locknuts on the mounting bracket.

Fig. 4



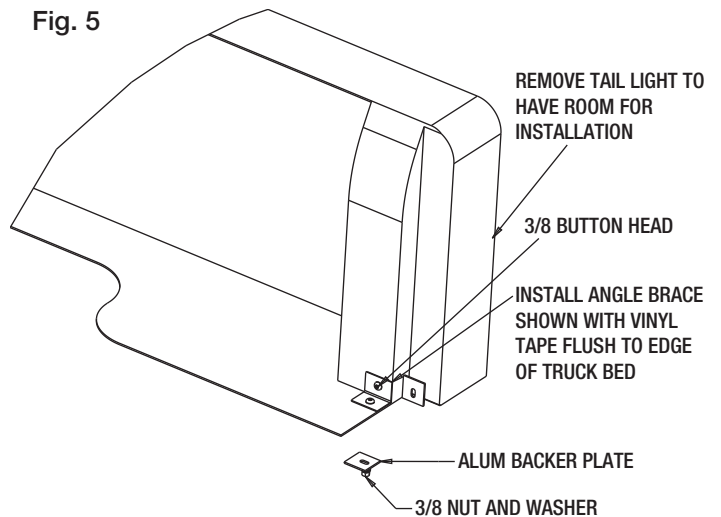
11. Let the liftgate hanging, supported at the bed-posts. Position the racket against the corner post and check for objects of possible interference. Using the bracket as a template, pick two holes and drill through the bottom of the bed with a 13/32" drill.

12. Secure each bracket to the truck bed using two 3/8"x1.5" bolts (6), two flat washers, and two nylock nut (11).

13. Align the mounting so the liftgate is straight and level. Tighten the four 3/8 x 1" bolts and four nylock to the liftgate. Use the four washers on the slot side.

14. Using the mounting bracket as a template, find the 3/8 hole on the bracket and drill a 13/32" hole in the truck corner post. Secure the newly drilled hole with the 3/8" fasteners included. Install the Angle Brace onto the corner post of the Truck Bed to give additional strength to the aluminum corner. Secure with two button heads bolts, two lock washers, and two nuts. Vinyl tape must be applied onto the back of the angle to protect the aluminum body.

Fig. 5

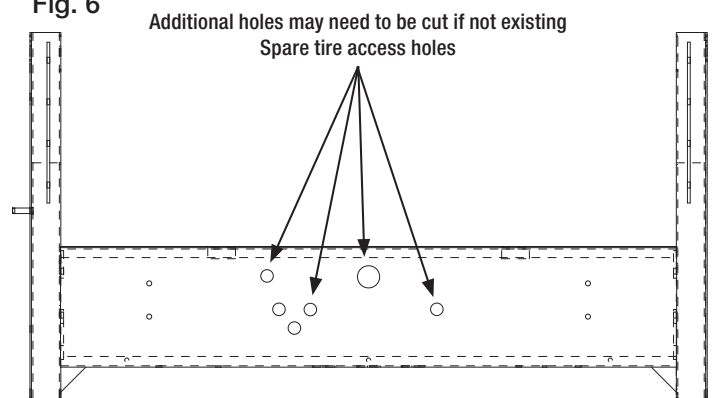


15. Repeat for the Driver Side installation. Re-install tail light lens if it was removed earlier.

16. Verify the spare tire access holes to be available.

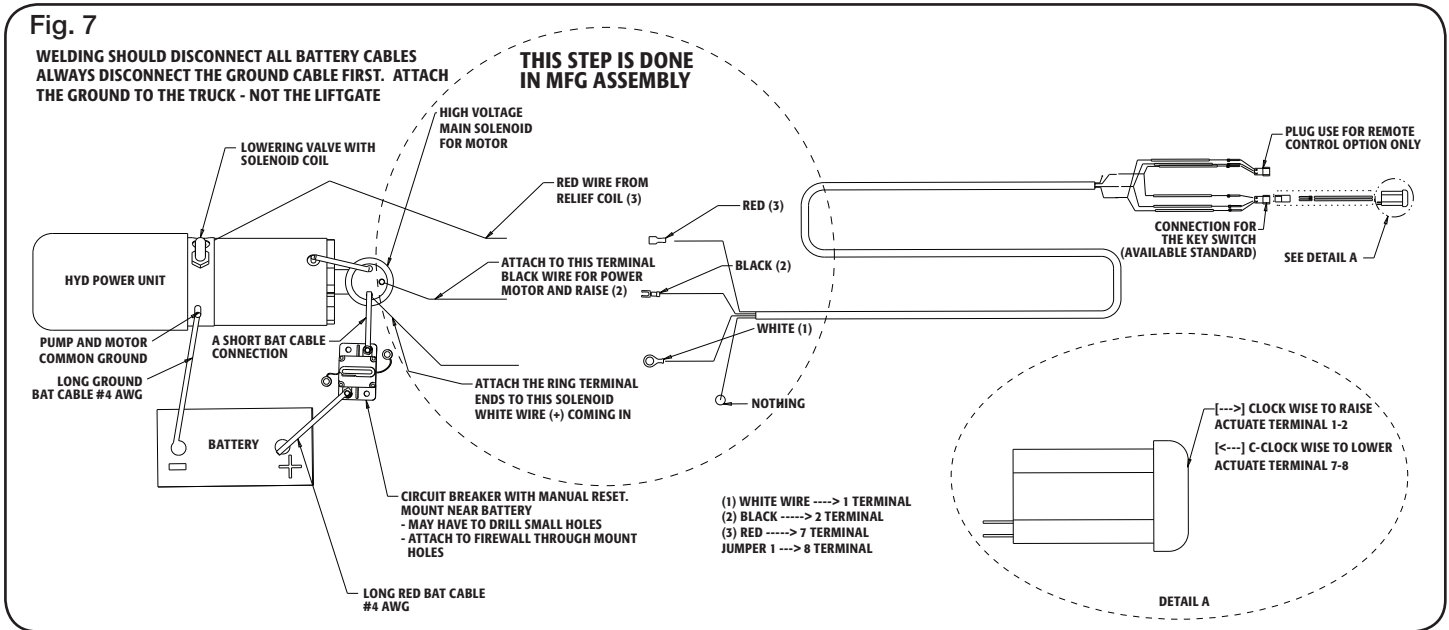
a. Simply remove the license plate cover and check the existing holes to allow you to get in through the hole.

Fig. 6



17. Liftgate for wiring.

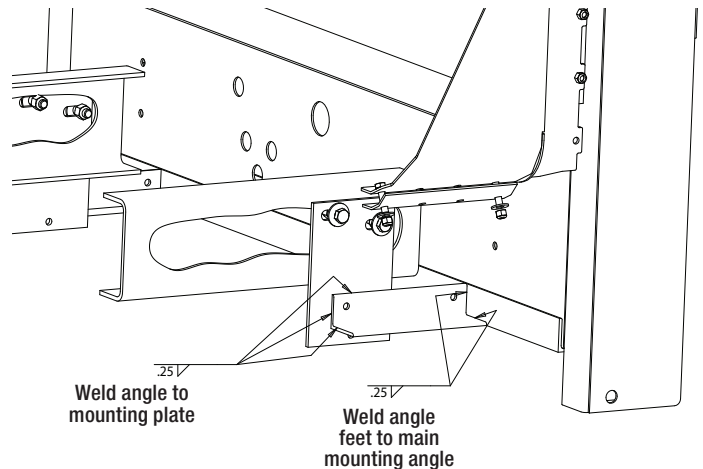
- a. Remove the 5/16 bolts holding the license cover. Pull out the misc parts bag/box.
- b. Review the Wiring circuit in the figure below.

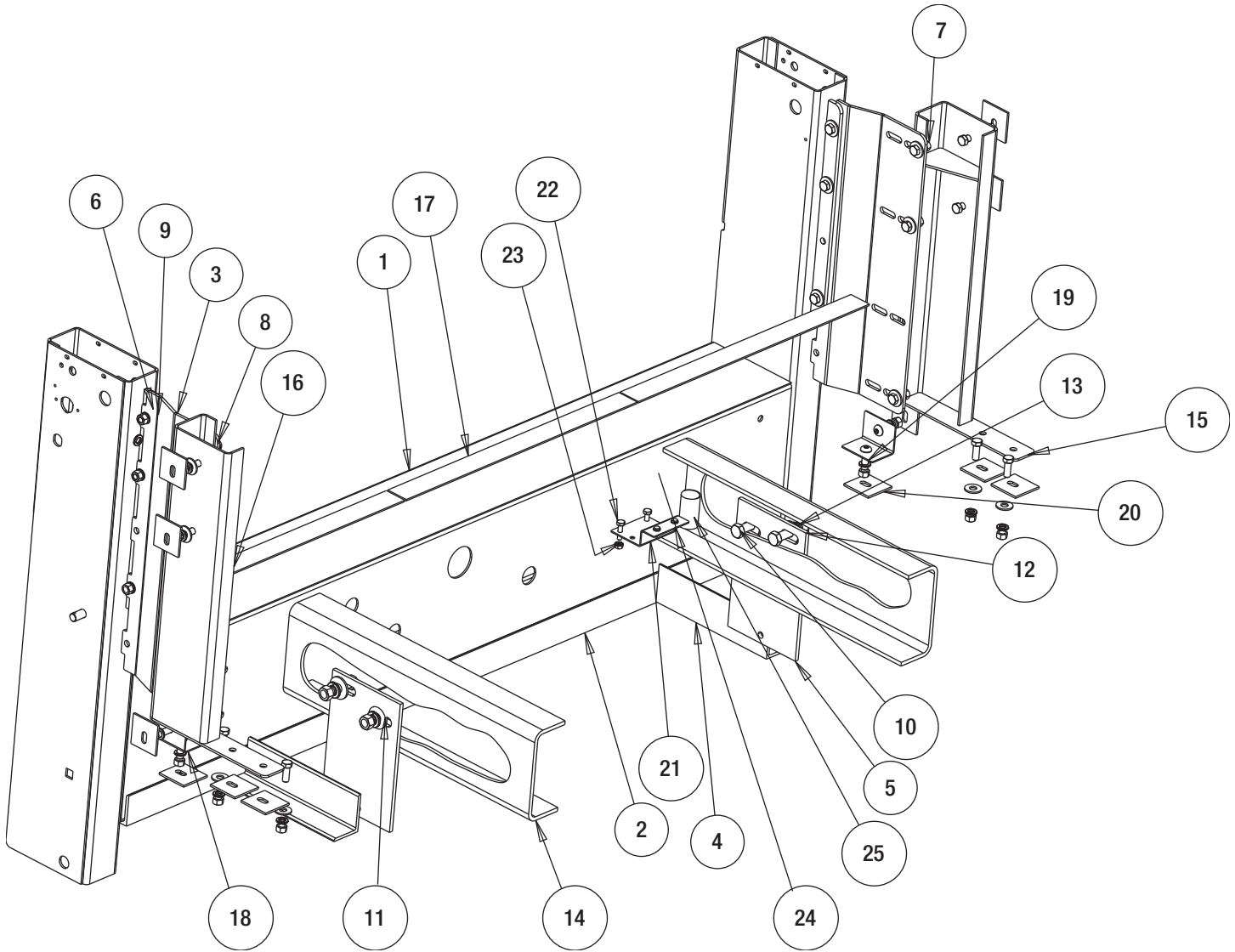


- 18.** Install the circuit breaker on the vehicle fender, firewall or inside the engine compartment away from moving parts [near battery]. Make sure there will be room for the wires to be installed and the reset button is accessible.
- 19.** Loosen the strain relief conduit in the back of the liftgate box. Pull the 4awg wire through the hole-leaving about 2 inches of slack for easy access. Tighten the conduit again.
- 20.** Run the wire underneath the truck and along the frame structure of the truck. Pull the wire beyond the battery location
- 21.** Split the negative and the positive wires to prepare them for attachment to battery.
- 22.** Cut the positive wire length needed to reach the auxiliary terminal of the circuit breaker installed earlier. Cut the remaining positive wire long enough to reach from the breaker to the positive Battery terminal. Cut the negative wire to the needed length to the battery terminal.
- 23.** Install the lower mount onto the frame. Remove the slotted bracket plates from the liftgate. This is located next to the hydraulic unit.
- 24.** Bolt the Bracket plates to the Frame where the holes are available (if not Drill). You may have to do simple modification to the plates.
- 25.** Clamp the short angle irons to the bracket plates. The short angle acting as an extension arm to the slotted angle irons.

- 26.** Tackweld the bracket plates to the short angle irons; and tack weld the short angle iron to the main long angle iron.
- 27.** Remove the tacked brackets by removing the bolts just installed earlier.
- 28.** Weld all seams with a 1/4" fillet weld.
- 29.** Secure the Welded Brackets back onto the truck frame and the bottom of the Lift Gate.
- 30.** Install the license Plate Light onto the cover. Wiring is not provided for this accessory.

Fig. 8





Bill of Materials

ITEM	PART NO.	QTY.	DESCRIPTION
1	3016802	1	FRAME, UPPER
2	3016646	1	ANGLE, LONG MOUNTING
3	3016645	2	FLANGE, F250 MOUNTING EXTENSION-PS&DS
4	3016655	2	ANGLE, FEET, MOUNT
5	3016647	2	PLATE, MOUNTING BOTTOM
6	FCS038016100	20	SCREW, HHC 3/8-16 X 1 GR 5 ZP
7	FNH038016028	23	NUT, 3/8-16 HEX ZP
8	FWL038069009SS	25	WASHER, LOCK RHS-3/8 SST
9	FWF038100007	20	WASHER, FLAT 3/8 USS ZINC
10	FCS050013150	4	SCREW, HEX HEAD CAP, 1/2-13X1.5, GR.5, ZN
11	FWF050138014	4	WASHER, FLAT, 1/2" USS, ZN
12	FNH050013043	4	NUT, HEX - 1/2-13, GR 8 PL
13	FWL050088013	4	WASHER, LOCK - 1/2 SPLIT ZN
14	—		TRUCK FRAME, PS & DS
15	3032757	1	SIDEPLATE, LG WELDMENT F150 DS
16	3032756	1	SIDEPLATE, LG WELDMENT F150 PS
17	3032758	3	PLATE, GAP FILLER - 15 F150
18	3032759	2	ANGLE, CORNER SUPPORT
19	3015335	4	SCREW, HEX SOCKET BHCS, 3/6-16X1.25, SST
20	3032760	12	BACKER PLATE, ALUM
21	3032761	1	BRACKET, CIR BREAKER

ITEM	PART NO.	QTY.	DESCRIPTION
22	FCS025020100	2	SCREW, CAP HEX HD 1/4-20 X 1 GR5 ZN
23	3001530	2	NUT, KEPS, 10-24, ZN
24	3018893	2	SCREW, SELF DRILL-SST, 10-16
25	3032762	1	VINYL TAPE, 2 X 140 INCH

WARRANTY

Buyers Products Co. warrants all truck/trailer hardware manufactured or distributed by it, to be free from defects in material and workmanship for a period of one year from date of shipment. Parts must be properly installed and used under normal conditions. Any product which has been altered, including modification, misuse, accident or lack of maintenance will not be considered under warranty. Normal wear is excluded. The sole responsibility of Buyers Products Co. under this warranty is limited to repairing or replacing any part or parts which are returned, prepaid, and are found to be defective by Buyers Products Co. Authorization from Buyers Products Co. must be obtained before returning any part. No charges for transportation or labor performed on Buyers' products will be allowed under this warranty.